
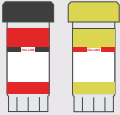


DAY 1 COLLECTION	DAY 2 COLLECTION
<p>Use Contents from DAY 1 Bag</p> <p>Make sure that the patient's name, date of birth and the date of collection are written on the vial.</p> <p>Remove the cap from the BLACK top vial and add stool following the instructions on page 4.</p> <p>Place the BLACK top vial back into the DAY 1 zip-lock bag.</p> <p>Store bag in refrigerator prior to shipping. Do not freeze.</p>	<p>Use Contents from DAY 2 Bag</p> <p>Make sure that the patient's name, date of birth and the date of collection are written on the vial.</p> <p>Remove the cap from the BLACK top vial and add stool following the instructions on page 4.</p> <p>Place the BLACK top vial back into the DAY 2 zip-lock bag.</p> <p>Store bag in refrigerator prior to shipping. Do not freeze.</p>

DAY 3 COLLECTION	
Use Contents from DAY 3 Bag	
<p>Make sure that the patient's name, date of birth and the date of collection are written on all vials.</p> <p>Remove the cap from the WHITE top vial and add stool following the instructions on page 4. This vial does not need to be shaken. Place the WHITE top vial into the separate bag provided and seal. Place the Polar Ice Pack into the pouch on the back of this bag and place in the freezer. Freeze for a minimum of 6 hours.</p>	
<p>Remove the caps from the YELLOW top vial and the BLACK top vial and add stool following the instructions on page 4. Place the YELLOW top vial and the BLACK top vial back into the DAY 3 zip-lock bag. Store bag in refrigerator prior to shipping. Do not freeze.</p>	

PREPARE THE PACKAGE

1. Fill out the Test Requisition:

- ✓ Patient name, date of birth, gender, and date of collection is recorded
- ✓ Payment type is completed and payment included, if required

2. After at least 6 hours, remove bag containing WHITE top vial from the freezer. Place the Specimen bag along with the Polar Ice Pack into the kit box.

3. Place DAY 1, DAY 2 and DAY 3 collection bags into the kit box. Place any unused vials (in collection bags) in the box. Place the Test Requisition into the kit box and close.

Please ship as soon as possible. If you cannot ship the specimen on the day of collection, store the White top vial in the freezer and the other vials in the refrigerator until ready to ship.

SCHEDULE A PICK-UP (UK ONLY)

Please follow the shipping instructions form contained within this test collection kit, which will tell you how to send back your test collection kit. Unless advised otherwise, please return your test collection kit to Regenerus Laboratories in the U.K. www.regeneruslabs.com.

COLLECTION INSTRUCTIONS STOOL SPECIMEN



Comprehensive Stool Analysis with Parasitology and GI360™

Read all instructions before collecting specimens.

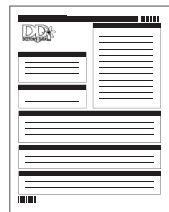
Distributed by
regenerus labs



If you are missing kit components, call Regenerus Laboratories on +442037500870 for assistance.



Kit Box



Requisition Form

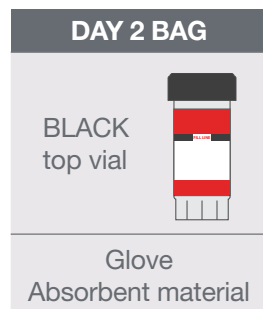


Ice Pack

*Courier
Shipping Label
UK ONLY*



Stool Collection Containers (3)



BEFORE YOU START: Please read all of the instructions carefully before beginning. Consult your physician for specific instructions and before stopping any medications.

DISCONTINUE THE FOLLOWING	
2 weeks before test	Antibiotics, antiparasitics, antifungals, or probiotic supplements, proton pump inhibitors (PPIs) and Bismuth
2 days before test	Aspirin and other NSAIDs, digestive enzymes, laxatives (particularly mineral oil and castor oil), activated charcoal, betaine HCl, antacids or bentonite clay

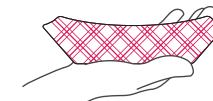
OTHER INFORMATION		
Do not collect samples when there is active bleeding from hemorrhoids or menstruation	Wait at least 4 weeks from a colonoscopy or barium enema before collecting	Do not contaminate the stool with urine or water

WHICH BAG CONTENTS TO USE			
Patients will collect stool over 1, 2, or 3 days, depending on the order from the physician. Confirm this detail before stool collection.			
	DAY 1 BAG	DAY 2 BAG	DAY 3 BAG
Collect Stool on 3 Separate Days	1st collection	2nd collection	3rd collection
Collect Stool on 2 Separate Days	✗	1st collection	2nd collection
Collect Stool on 1 day	✗	✗	only collection

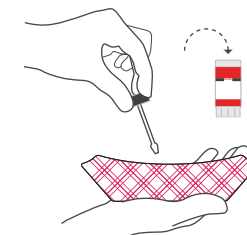
HOW TO COLLECT YOUR STOOL SAMPLE

Write the Patient's Name, Date of Birth and the Date Collected on each Specimen Vial. Make sure to use the correct vials for each day of collection. See Page 5 for more details.

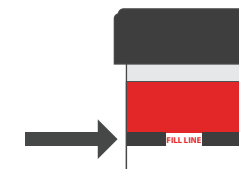
1. Put on glove and collect stool into the paper collection container supplied. If possible, void urine prior to collecting stool to avoid mixing it with the stool sample.



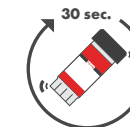
2. Remove the cap from the vial and using the attached spoon transfer stool specimen into the vial. Take multiple portions from different areas of the collection container.



3. Add enough stool until liquid reaches the **fill line**. **DO NOT OVERFILL**. Screw the cap on tightly.



4. Shake the vial vigorously for approximately 30 seconds to mix stool with preservative.



The BLACK and YELLOW top vials are filled to the middle of the vial with liquid preservative. If the liquid levels fall below the middle of the vial or there is evidence of leakage, call Customer Service for assistance. **Caution:** avoid contact of the skin and eyes with the fluid in vials. If you get fluid in your eyes, flush with water for 15 minutes. If your skin comes in contact with vial fluid, wash with soap and water. If ingested, please contact a physician.