

Correct collection process is vital to receiving the most accurate NGS diagnostic results. Please follow the steps below.

THIS TEST COMES WITH:



COLLECTION DO'S & DON'TS

- ✓ **DO** - Clean the genital area with soap and water before collecting the sample.
- ✗ **DO NOT** - Use a condom to collect the semen.
- ✗ **DO NOT** - Let the specimen come into contact with anything other than the collection cup. Including hands or any other body part.
- ✗ **DO NOT** - Take antibiotics. Patient must be off all antibiotics for 2 days prior to collection. This is optimal. However, if not possible, the test can still be run.

COLLECTING SEMEN SAMPLE

STEP 1

Clean the genital area with included Alcohol Prep Pad.



STEP 2

- a. Collect semen excretion into sterile container.
- b. If enough excretion is collected (more than a pea size amount), cap and seal the container and prepare for shipping. *If you have only collected a minimal amount, proceed to step 3.*



STEP 3

If only a minimal amount of semen excretion is collected (pea size amount) use the swab to collect the fluid by rolling swab through the fluid in the collection cup collecting as much fluid as possible on the swab tip. Please return **BOTH** swab and container.



Place the swab into the tube and cap the tube firmly.



SEE PATIENT INFORMATION & SHIPPING INSTRUCTIONS ON REVERSE



Correct collection process is vital to receiving the most accurate NGS diagnostic results. Please follow the steps below.

PATIENT INFORMATION

1. MARK SAMPLE

Use a permanent marker to write patient name, date of birth and sample collection date on the 90mL Cup or Multi-Purpose Swab Specimen Tube.



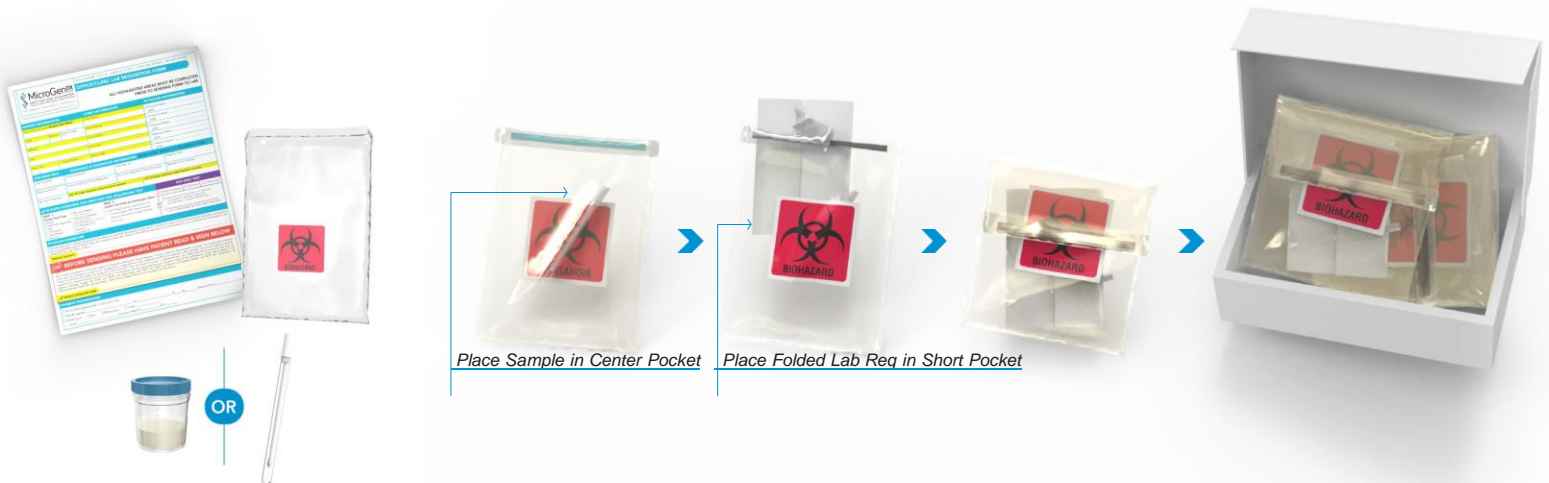
2. SIGN LAB REQ

Please have the patient sign the lab requisition form accepting financial responsibility. Be sure the physician has also signed the lab requisition form confirming consent.



PACKING SAMPLES FOR SHIPMENT

1. Place the 8mL Vacuum Vial and either the 90mL Collection Cup or Multi-Purpose Swab Tube into the centre/sealable pocket of Biohazard Lab Bag.
2. Place folded Lab Requisition Form into the short pocket of the Lab Bag.
3. **IMPORTANT:** Place only one Sample and one Lab Requisition in each Lab Bag.
4. Peel strip off Lab Bag to expose adhesive backing and follow instructions printed on Bag to create a continuous, airtight seal.
5. Place each sealed Lab Bag into the white Shipping Box and apply the pre-paid return shipping label to the outside and seal.
6. You can add multiple completed biohazard lab bags into 1 white shipping box.



3 SHIPPING

Please use the shipping label provided and follow the instructions in the separate returns document



THIS TEST COMES WITH:



1 Lab Requisition

Box with Return Label

COLLECTION DO'S & DON'TS

- ✓ **DO** - Clean the genital area with soap and water before collecting the sample.
- ✓ **DO** - Perform a preparatory urination two hours in advance of first sample.
- ✓ **DO** - Be sure to press vial onto needle in a smooth, quick motion to ensure successful transfer a sample liquid.
- ✓ **DO** - Place sellotape (see step 4-b) over the cap attaching firmly to both sides of the vial after taking the sample.
- ✗ **DO NOT** - Use Lidocaine gel. If collecting urine via catheter, Lidocaine gel can render sample invalid or give false negative test results.
- ✗ **DO NOT** - Take in any fluids two hours in advance of first sample.
- ✗ **DO NOT** - Take antibiotics. Patient must be off all antibiotics for 2 days prior to collection. This is optimal. However, if not possible, the test can still be run.
- ✗ **DO NOT** - Fill 8ml vial more than 1/2 full.
- ✗ **DO NOT** - Remove rubber cap from 8ml sample vial. Vials are shipped vacuum sealed. If pressurized transfer fails, pour liquid into 8mL Vial, cap tightly, seal with sellotape.

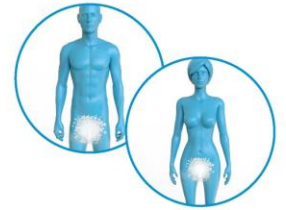
Scan this code with your mobile device to view a video tutorial of the collection process.



COLLECTING URINE SAMPLE WITH VACUTAINER

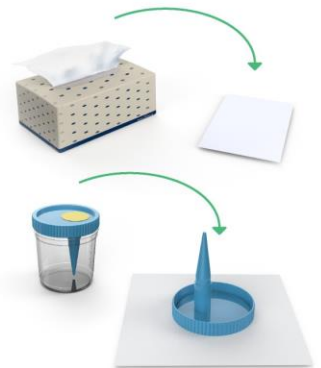
STEP 1

Cleanse all areas around the urinary exit with soap and water. With a clean tissue, blot off the urethra without touching any part of genital area with hands.



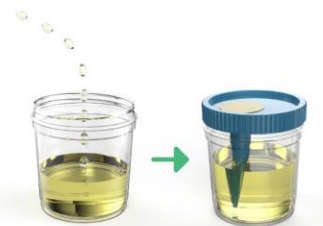
STEP 2

Spread a clean tissue on a surface close to the toilet bowl. Remove the lid from the urine cup and place it top-side down on the tissue. Place the open urine cup next to the tissue, being careful not to touch the rim of the cup or lid with fingers or body surface at any time.



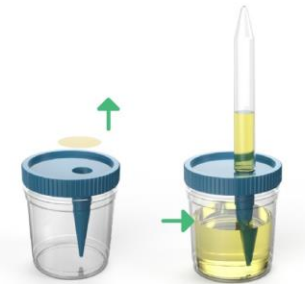
STEP 3

Hold the empty cup in one hand. Begin urination into toilet, not cup, stop urination partway through then continue urination into cup. Keep urinating into cup until cup is 1/3 to 1/2 full, then withdraw cup. Secure lid tightly.

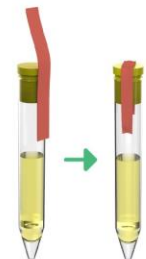


STEP 4

a. Peel yellow label off lid. **CAUTION: Needle under label - DO NOT push finger through label.** Once label is removed, press the yellow rubber capped end of 8ml vial onto the needle to enable vacuum transfer of urine into the 8ml specimen tube. Draw in at least 4ml (half full) of the sample fluid and remove specimen tube with cap intact.



b. Place sellotape over 8ml vial cap. Ensure seal strip is firmly attached on both sides of vial to prevent cap from coming off during transit.



SEE PATIENT INFORMATION & SHIPPING INSTRUCTIONS ON REVERSE



Correct collection process is vital to receiving the most accurate NGS diagnostic results. Please follow the steps below.

PATIENT INFORMATION

1. MARK SAMPLE

Use a permanent marker to write patient name, date of birth and sample collection date on 8mL Vacuum Vial.



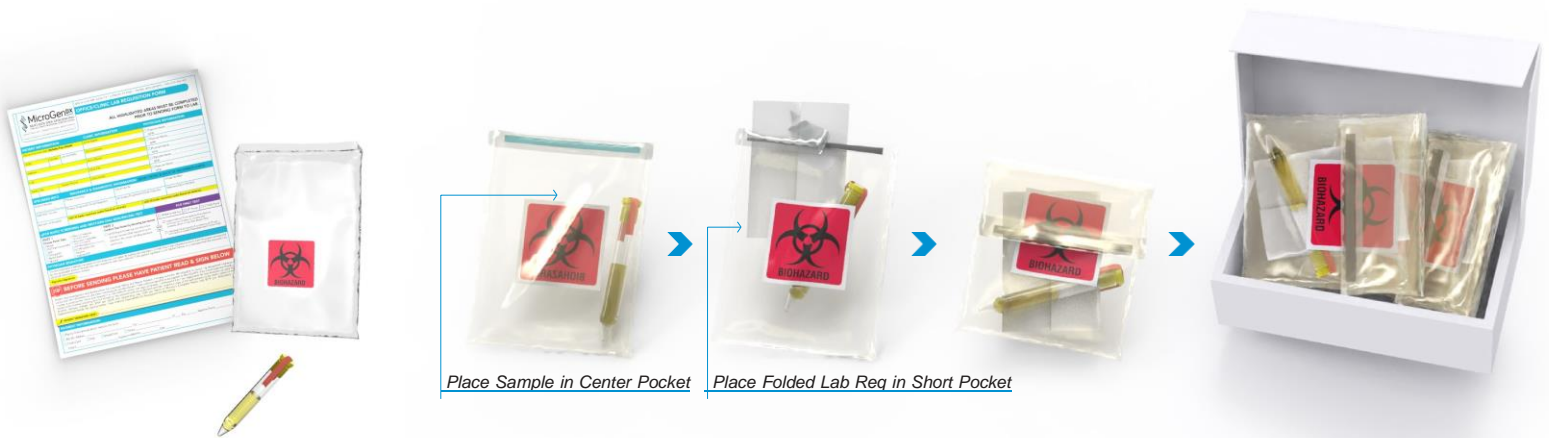
2. SIGN LAB REQ

Please have the patient sign the lab requisition form accepting financial responsibility. Be sure the physician has also signed the lab requisition form confirming consent.



PACKING SAMPLES FOR SHIPMENT

1. Place the 8mL Vacuum Vial and either the 90mL Collection Cup or Multi-Purpose Swab Tube into the centre/seal-able pocket of Biohazard Lab Bag.
2. Place folded Lab Requisition Form into the short pocket of the Lab Bag.
3. **IMPORTANT:** Place only one Sample and one Lab Requisition in each Lab Bag.
4. Peel strip off Lab Bag to expose adhesive backing and follow instructions printed on Bag to create a continuous, airtight seal.
5. Place each sealed Lab Bag into the white Shipping Box and apply the pre-paid return shipping label to the outside and seal.
6. You can add multiple completed biohazard lab bags into 1 white shipping box.



3 SHIPPING

Please use the shipping label provided and follow the instructions in the separate returns document

